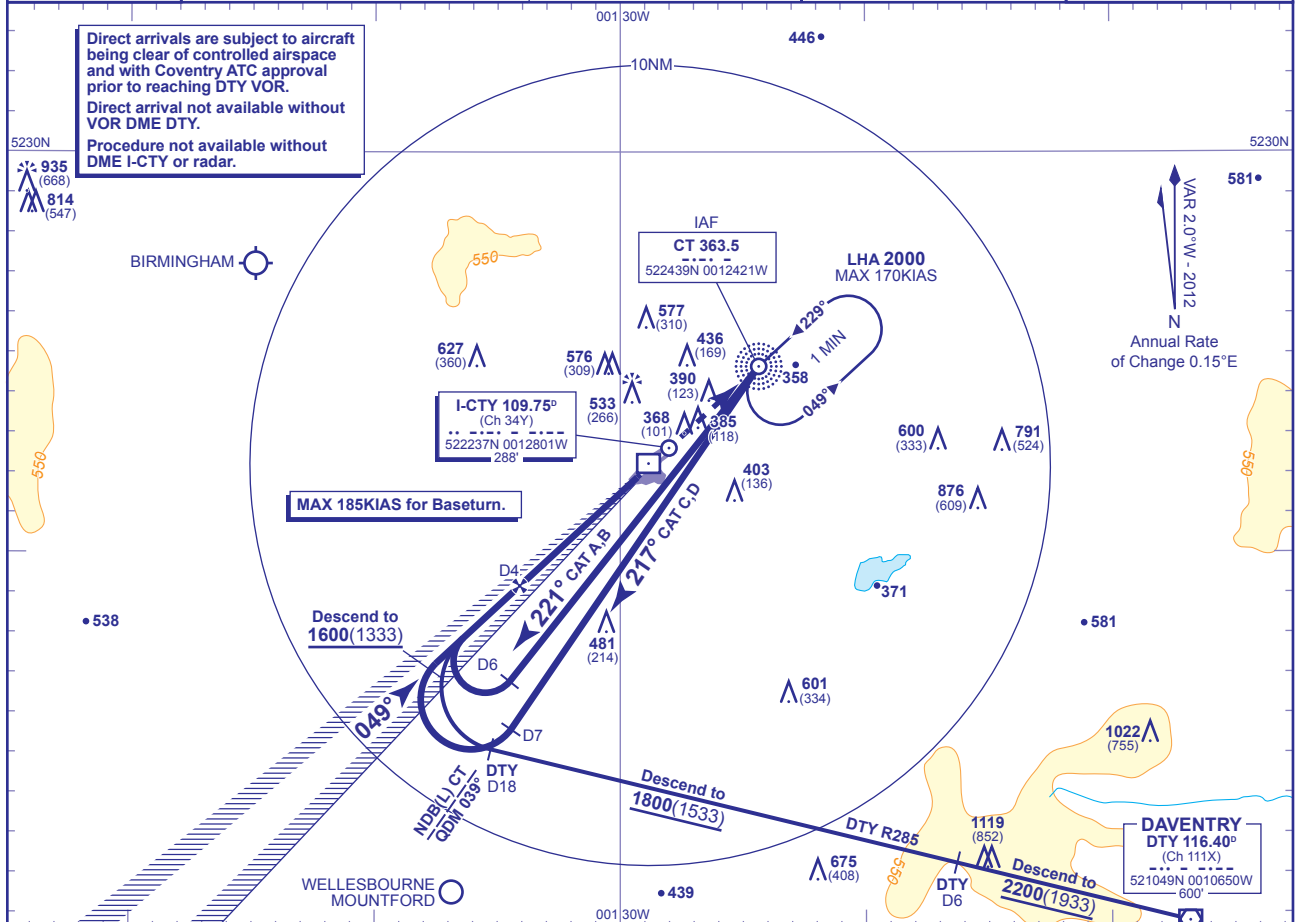


INSTRUMENT APPROACH CHART - ICAO

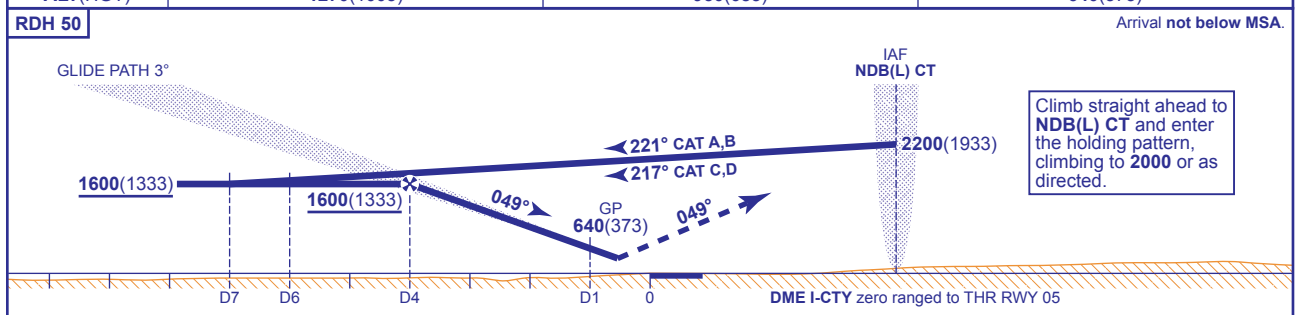
COVENTRY
ILS/DME
RWY 05
 (ACFT CAT A,B,C,D)

	APP 123.825	COVENTRY APPROACH	AD ELEVATION 267
	TWR 123.825, 118.175	COVENTRY TOWER	THR ELEVATION 267
	121.700	COVENTRY GROUND	OBSTACLE ELEVATION 1119 AMSL (852) (ABOVE THR)
	RAD 123.825, 136.150	COVENTRY RADAR	BEARINGS ARE MAGNETIC
	ATIS 126.050	COVENTRY INFORMATION	TRANSITION ALTITUDE 6000



RECOMMENDED PROFILE GLIDE PATH 3°, 320FT/NM

DME I-CTY	3	2	1
ALT(HGT)	1270(1003)	950(683)	640(373)



Aircraft Category	A	B	C	D	Rate of descent	G/S KT	160	140	120	100	80
OCA (OCH)	CAT I	426(159)	434(167)	442(175)	452(185)	FT/MIN	860	750	640	540	430
VM(C)OCA (OCH AAL)	Total Area	830(563)	880(613)	980(713)	1030(763)						

AIRCRAFT UNABLE TO RECEIVE DME I-CTY
 Advise ATC. Radar Ranges will be provided at 6NM (CAT A,B) or 7NM (CAT C,D) outbound and 4NM inbound.

NOTE Lowest altitude to commence procedure from hold is 2000.

CHANGE: MAG VAR. REC PROFILE. MINIMA. MAX KIAS BASETURN. ANNUAL RATE OF CHANGE. OBSTACLES.

AERO INFO DATE 9 DEC 11