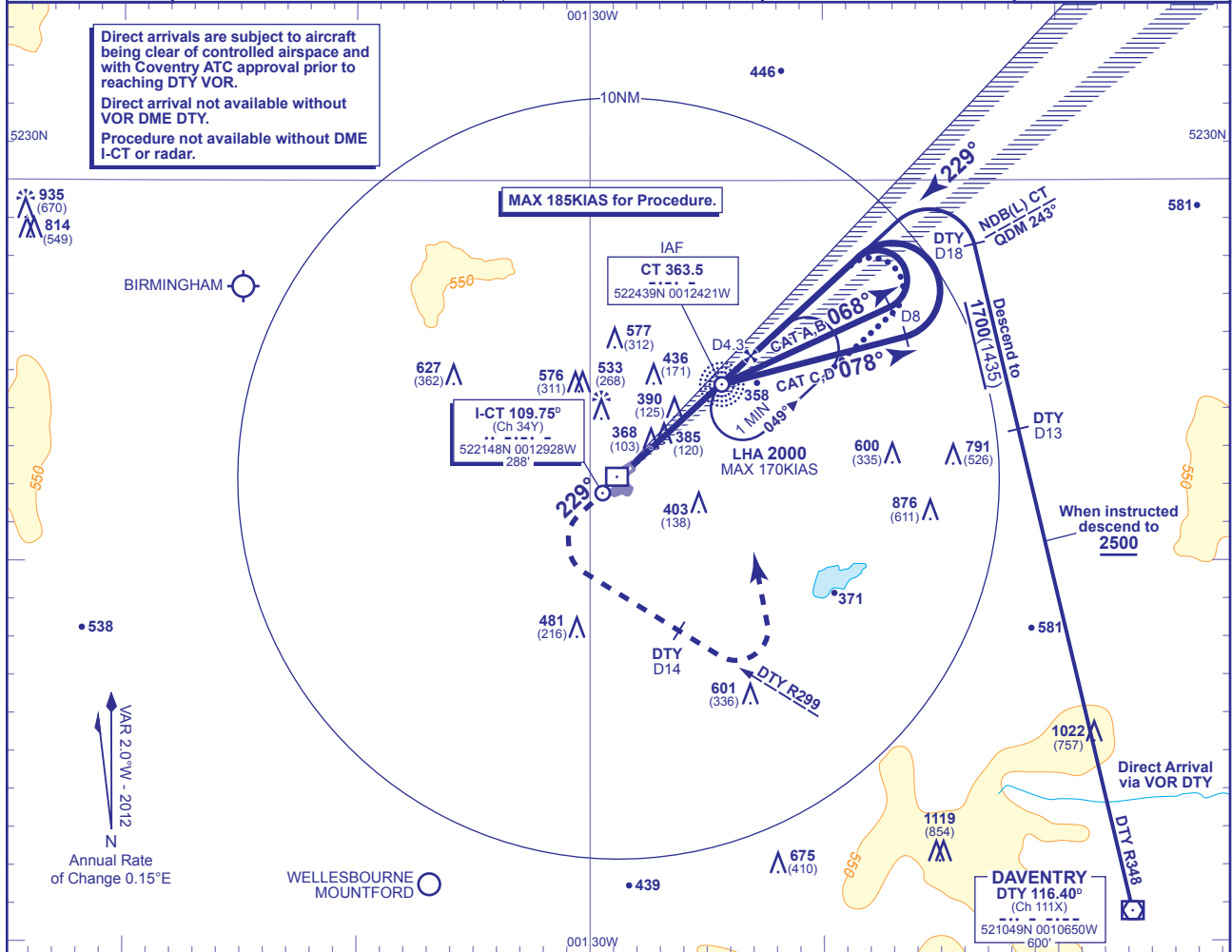


INSTRUMENT APPROACH CHART - ICAO

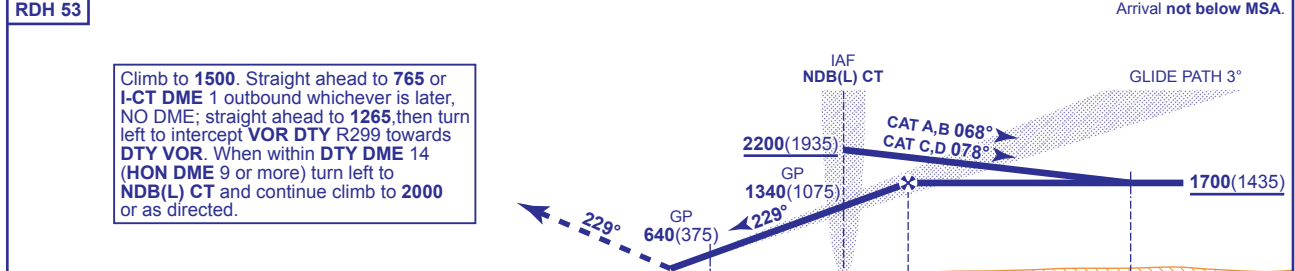
COVENTRY
ILS/DME
RWY 23
(ACFT CAT A,B,C,D)

	APP 123.825	COVENTRY APPROACH	AD ELEVATION 267
	TWR 123.825, 118.175	COVENTRY TOWER	THR ELEVATION 265
	121.700	COVENTRY GROUND	OBSTACLE ELEVATION 1119 AMSL (854) (ABOVE THR)
	RAD 123.825, 136.150	COVENTRY RADAR	
	ATIS 126.050	COVENTRY INFORMATION	
			TRANSITION ALTITUDE 6000



RECOMMENDED PROFILE GLIDE PATH 3°, 320FT/NM

DME I-CT	4	3	2	1
ALT(HGT)	1590(1325)	1270(1005)	960(695)	640(375)



DME I-CT zero ranged to THR RWY 23

Aircraft Category	A	B	C	D	Rate of descent	G/S KT	160	140	120	100	80
OCA (OCH)	CAT I	409(144)	419(154)	431(166)	444(179)		860	750	640	540	430
VM(C)OCA (OCH AAL)	Total Area	830(563)	880(613)	980(713)	1030(763)						

ALTERNATIVE PROCEDURE EXTENDED HOLDING PATTERN
Extend the outbound leg of the NDB(L) CT holding pattern to I-CT DME 8, descending to 1700(1435). At I-CT DME 8, turn left to establish on the localiser. Once established continue as for main procedure.

AIRCRAFT UNABLE TO RECEIVE DME I-CT
Advise ATC. Radar Ranges will be provided at 8NM and 4NM inbound.

NOTE Lowest altitude to commence procedure from hold is 2000.

CHANGE: MAG VAR. REC PROFILE. MINIMA. MAX KIAS. MAP. PROCEDURE. CAT C, D OUTBOUND. ANNUAL RATE OF CHANGE. OBS. ALTERNATIVE PROCEDURE.